

Napa County The Real Cost Measure in California 2023

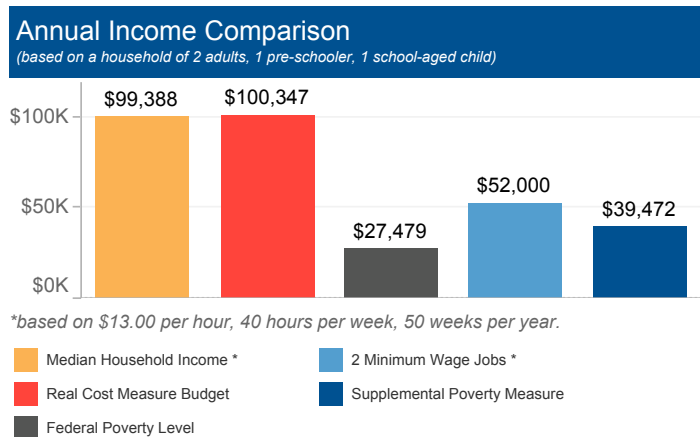


United Ways of California

The Real Cost Measure (RCM) estimates the amount of income required to meet basic needs including the costs of housing, child care, food, transportation, health care, and taxes. Unlike the official poverty measure which is primarily calculated based on the cost of food adjusted for inflation annually, the Real Cost Measure takes into account geographical differences in the cost of living throughout California.

If any results show blank values, that indicates the sample size is too small to illustrate Real Cost Measure results. Per our methodology, estimates with a cell size of greater than 5,000 are assumed to be accurate within +/-1% based on design factor analysis. Cell sizes less than 5,000 are suppressed.

# of Households below Real Cost Measure	% of Households below Real Cost Measure	% of Households below Real Cost Measure with at least 1 Working Adult
11,554	29%	94%



Household Budgets

	1 Adult	2 Adults	2 Adults, 1 Pre-schooler, 1 School-aged child
Housing	\$15,972	\$18,372	\$24,216
Food	\$4,392	\$8,052	\$12,456
Health Care	\$2,580	\$5,160	\$10,332
Child Care	\$0	\$0	\$19,440
Transportation	\$5,688	\$11,364	\$11,364
Miscellaneous	\$2,868	\$4,296	\$7,776
Taxes/Credits	\$5,839	\$7,350	\$14,763
FINAL BUDGET	\$37,339	\$54,594	\$100,347

Households of Color

Across the county, African Americans and Latinos have a disproportionate number of households with incomes below the Standard. In this area, of the 11,554 households below the Real Cost Measure, 5,736 are Latino.

Households with Young Children

A sufficient sample size is not available to report on the number of households with young children struggling below the Real Cost Measure.

Working Households

- 94% of households below RCM have at least one working adult.
- 80% of heads of household who work are employed full time and year round.
- A family of four (2 adults, 1 infant, 1 school-aged child) would need to hold more than 3 full time, minimum-wage jobs to achieve economic security.**

Housing Burden

- 39% of all households in the county spend more than 30% of their income on housing.

Education

	# below RCM	% below RCM
Less than High School		
High School Diploma or Equivalent		
Some College, Assoc. or Voc.		
Bachelor's degree or higher		

Ethnicity

	# below RCM	% below RCM
Latino	5,736	55%
African American		
Asian American / Pacific Islander		
White		
Native American/Alaska Native		

Household Type

	# below RCM	% below RCM
Single Mothers		
Seniors		
Married Couples		
Informal Families		

Citizenship/Nativity

	# below RCM	% below RCM
Foreign Born, Non-Citizen		
Foreign Born, Naturalized		
Born a US Citizen	7,046	23%

** Minimum waged jobs based on \$13.00 per hour, 40 hours per week, 50 weeks per year. Median household earnings control for elder-led households and household led by persons with disabilities consistent with the Real Cost Measure.