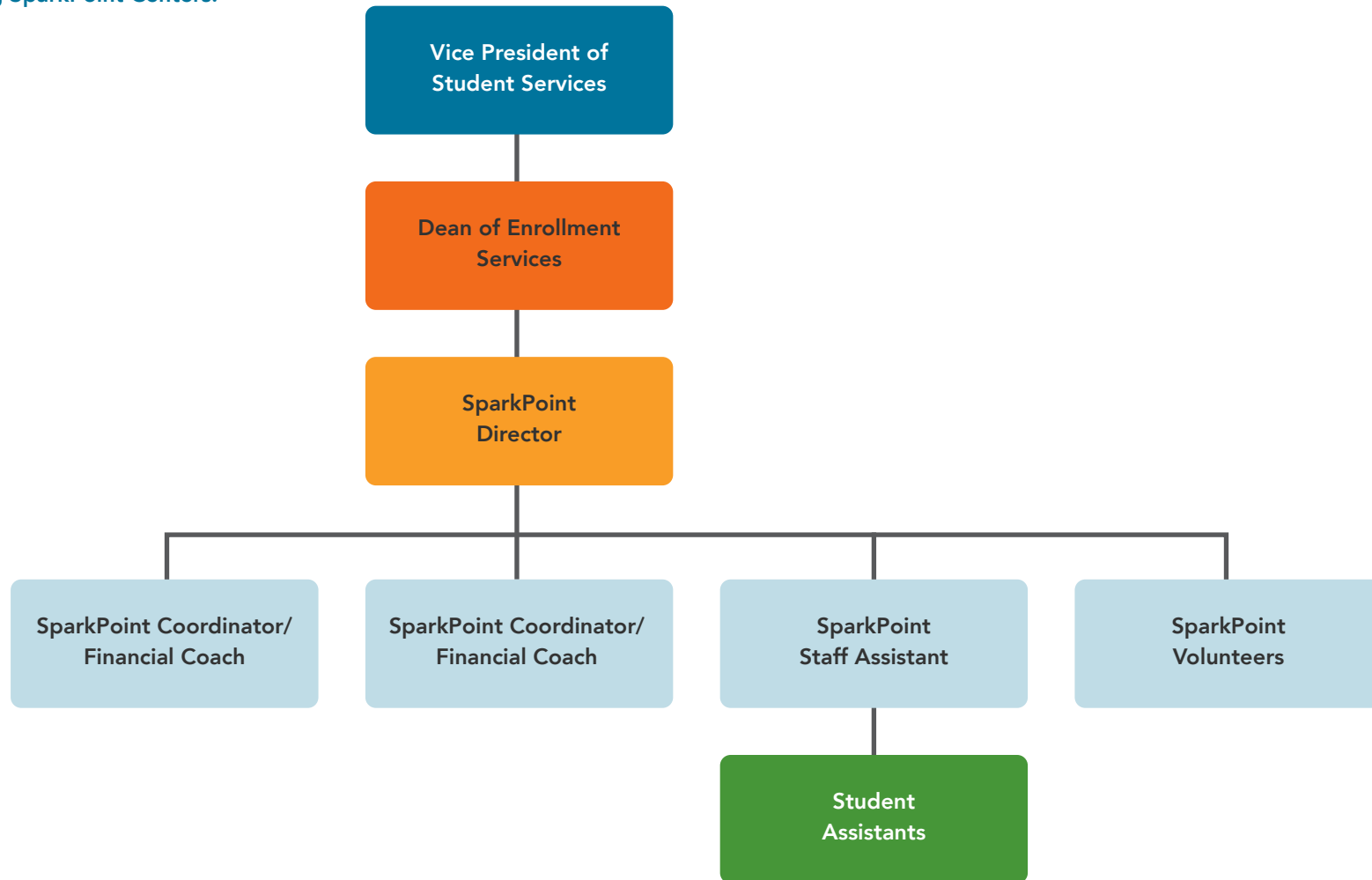


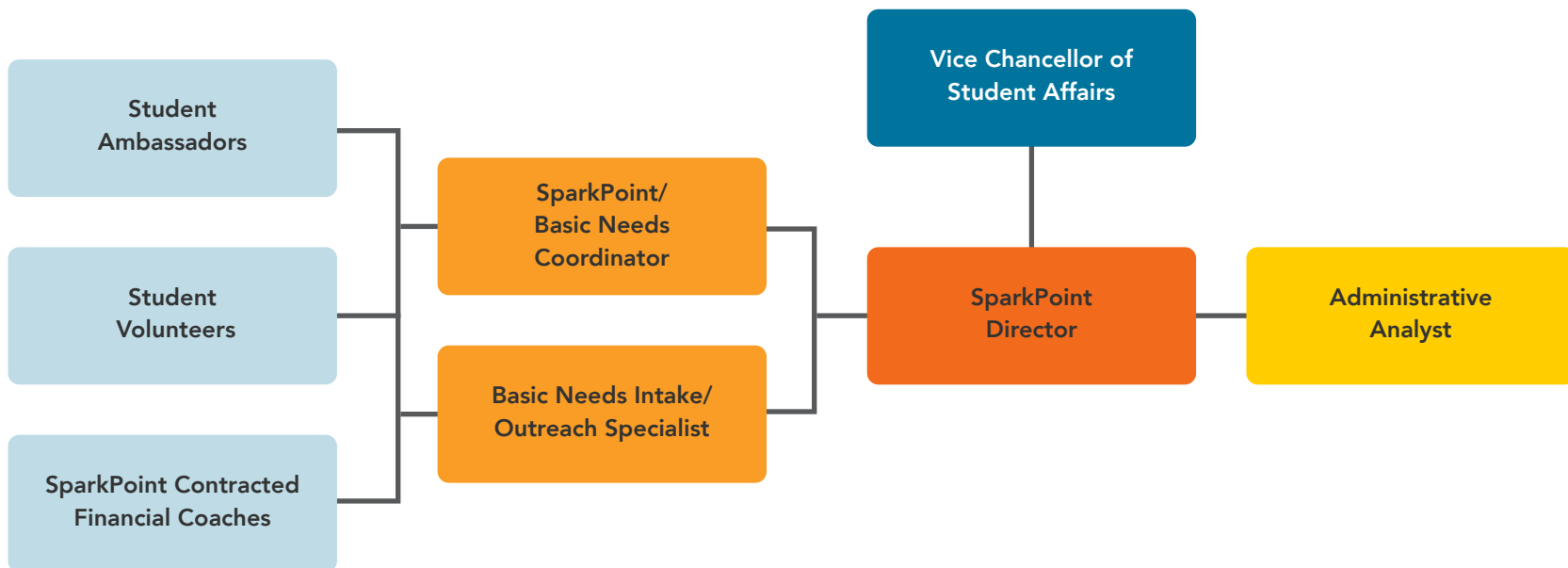
## SAMPLE A ORGANIZATIONAL CHART

This example Organizational Chart is based on the structure of existing SparkPoint Centers.



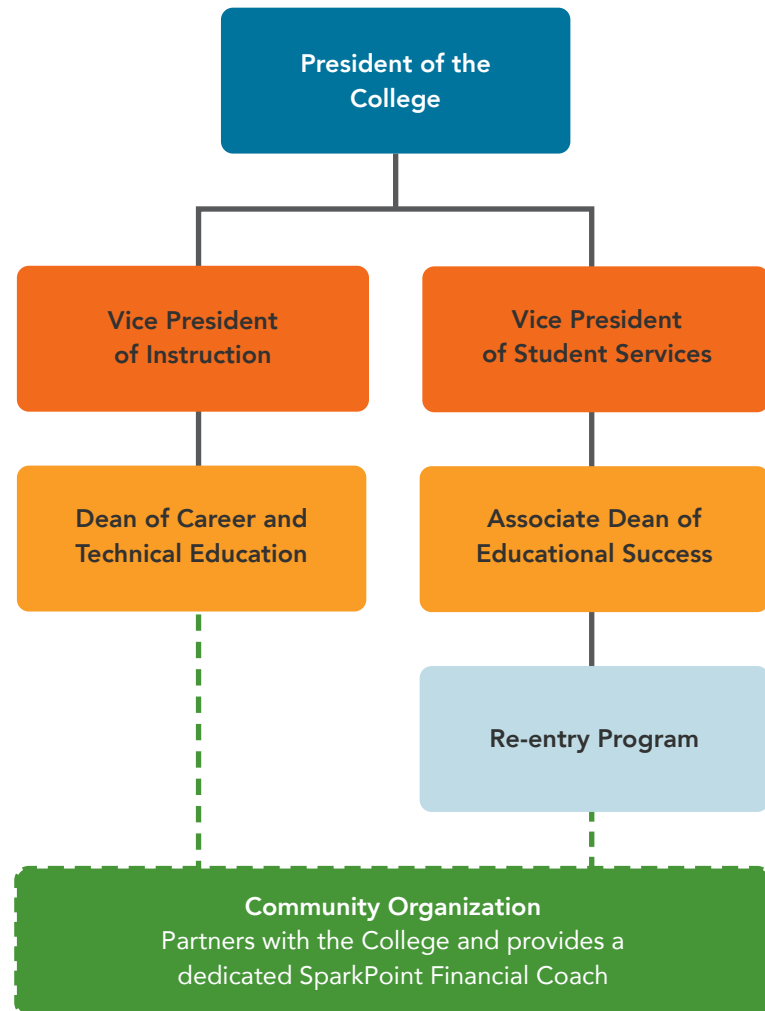
## SAMPLE B ORGANIZATIONAL CHART

This example Organizational Chart is based on the structure of existing SparkPoint Centers.



## SAMPLE C ORGANIZATIONAL CHART

This is an example of an Organizational Chart at a college that contracts with a community-based SparkPoint Center to have the SparkPoint Financial Coach provide services to students. This is based on an existing SparkPoint Center.



-----

The dashed line indicates a close working relationship, but not a supervisory one. In this example, the college has a contract with a local community organization to provide financial coaching to CTE and Re-entry students. The Financial Coach supports students on-campus and works closely with the CTE and Re-entry program staff, but is employed and supervised by the community organization.